



# INSTRUCTION BULLETIN

No. 9008459  
Machine: T16  
Published: 04-2011  
Rev. 00

**NOTE: DO NOT DISCARD the Parts List from the Instruction Bulletin. Place the Parts List in the appropriate place in the machine manual for future reference. Retaining the Parts List will make it easier to reorder individual parts and will save the cost of ordering an entire kit.**

*NOTE: Numbers in parenthesis ( ) are reference numbers for parts listed in Bill of Materials.*

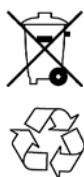
Installation instructions for **kit number 9008043**

## SYNOPSIS:

This kit contains the parts needed to install a spray nozzle kit on T16 sweepers.  
Please follow step-by-step instructions.

## SPECIAL TOOLS / CONSIDERATIONS: NONE

(Estimated time to complete: 5 hours)



### PROTECT THE ENVIRONMENT

Please dispose of packaging materials, old machine components, and hazardous fluids in an environmentally safe way according to local waste disposal regulations.

Always remember to recycle.

## PREPARATION:

1. Completely empty both the solution tank and the recovery tank.
2. Park the machine on a clean level surface.
3. Remove the brushes from the scrub head and completely lower the scrub head. Machines with cylindrical scrub heads only: Remove the debris tray.
4. Turn off the machine and and remove the key.

**FOR SAFETY: Before leaving or servicing machine, stop on level surface, turn off machine, and remove key.**

5. Disconnect the battery cables from the batteries.



**WARNING: Always disconnect battery cables from machine before working on electrical components.**

6. Disconnect the seat switch from the operator seat and remove the operator seat assembly from the machine.
7. Get assistance to remove the batteries from the machine. Remove the rear batteries from the machine.

**FOR SAFETY: Due to battery weight, always get assistance for removing batteries from machine.**

8. Disconnect the main wire harness and hoses from the FaST / ec-H20 / ES assembly. Set hose clamps aside.
9. Remove all FaST / ec-H20 / ES components from the recovery tank. Set the FaST / ec-H20 / ES assembly and hardware aside.
10. Disconnect the main wire harness and hoses from the pump assembly. Set hose clamps aside.

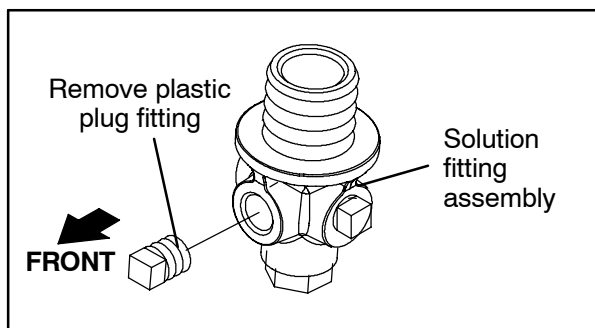
11. Remove the pump assembly from the back end of the machine. Set the pump assembly and hardware aside.
12. Disconnect the main wire harness and hoses from the recovery tank. Set hose clamps aside.
13. Remove the recovery tank from the machine. Set the recovery tank and hardware aside.

**INSTALLATION:**

**NOTE:** Do Not cut the band holding the spray hose into the spray hose reel until after the spray hose assembly is installed onto the machine.

**NOTE:** Refer to **RESETTING REEL ASSEMBLY SPRING TENSION** at the end of this IB for instructions how to reset the reel assembly tension for the spray hose if the hose should come unwound from the reel assembly.

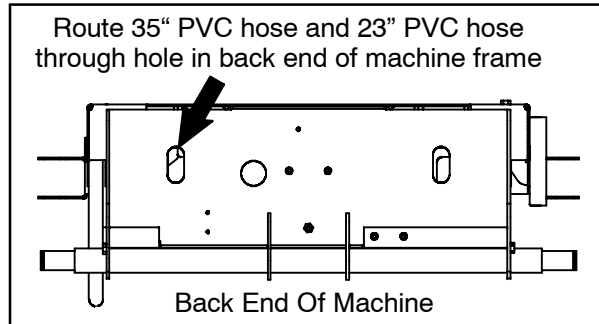
1. Use four M5 hex screws (24), four flat washers (25), and four M5 hex nuts (26) to install the solution pump (23) onto the pump bracket (22). Refer to Fig. 3.
2. Use a hose clamp (29) to install the 35" PVC hose (34) and the 23" PVC hose (35) onto the solution pump (23). Refer to Fig. 3.
3. Use a M8 SEMS hex screw to install the pump bracket (22) / solution pump (23) onto the frame of the machine. Refer to Fig. 3.
4. Remove the plastic plug fitting from the front of the solution fitting assembly. Discard the plug fitting. Refer to the inset in Fig. 1.



**FIG. 1**

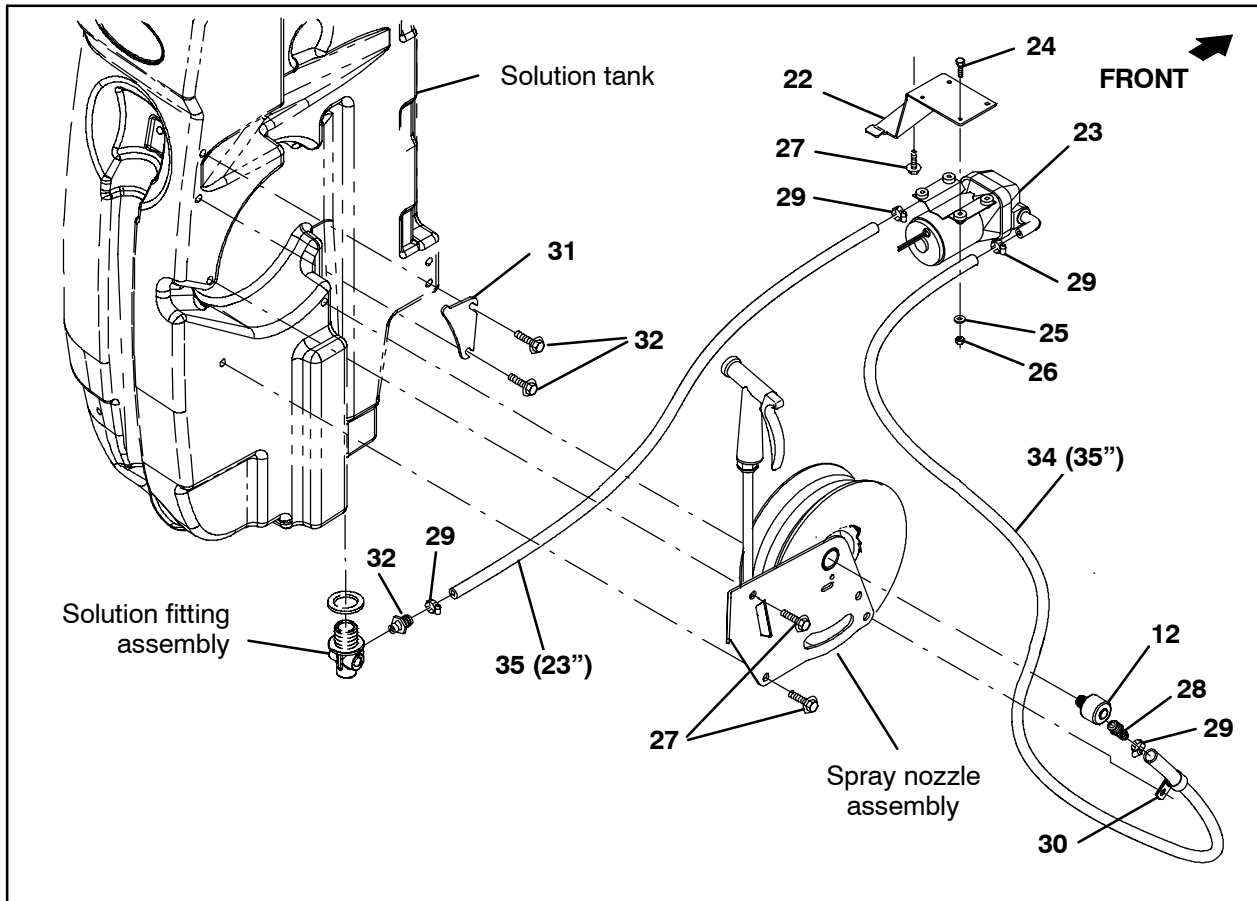
5. Connect the main wire harness to the solution pump (23). Refer to the inset in Fig. 6.

6. Install the plastic straight fitting (32) into the solution fitting assembly. Refer to Fig. 3.
7. Route the 23" PVC hose (35) through the hole in the frame of the machine and to the solution fitting assembly. Use a hose clamp (29) to connect the PVC hose to the plastic straight fitting (32). Refer to Fig. 2 and Fig. 3.



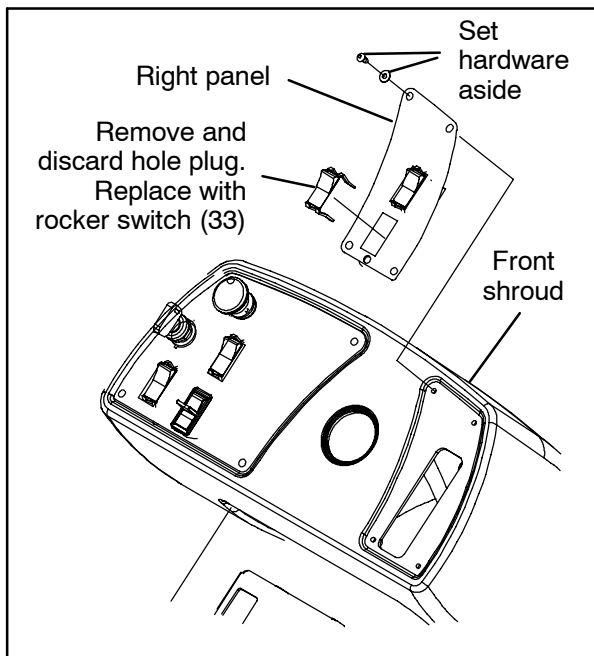
**FIG. 2**

8. Route the 35" PVC hose (34) through the hole in the frame of the machine. Refer to Fig. 2.
9. Install the straight brass fitting (28) onto the swivel fitting (12). Refer to Fig. 3.
10. Install the swivel fitting (12) onto the spray hose assembly. Refer to Fig. 3.
11. Use three SEMS M8 hex screws (27) to install the spray hose assembly onto the solution tank. Refer to Fig. 3.
12. Use two SEMS M8 hex screws (27) to install the nozzle hook onto the solution tank. Refer to Fig. 3.
13. Cut band from around the spray hose assembly. Do Not allow the spray hose to unravel loose from the spray hose assembly.
14. Use a hose clamp (29) to connect the 35" PVC hose (34) to the straight brass fitting (28) installed on the swivel fitting (12). Refer to Fig. 3.
15. Use a cable clamp (30) and a SEMS M8 hex screw (27) to secure the 35" PVC hose (34) to the spray hose assembly. Refer to Fig. 3.



**FIG. 3**

16. Carefully lift the right panel from the front shroud. Do not break any wire connections when lifting the right panel from the shroud. Set the hardware aside. Refer to Fig. 4.



**FIG. 4**

- 17. Remove the hole plug from the location on the right panel where the rocker switch (33) will be installed. Refer to Fig. 4.
- 18. Insert the rocker switch (33) into the hole where the hole plug was previously located. Refer to Fig. 4.
- 19. Connect the main wire harness to the rocker switch (33). Refer to Fig. 5.
- 20. Reinstall the right panel onto the front shroud. Refer to Fig. 4.
- 21. Reinstall all parts and components removed to install the spray nozzle kit onto the machine. Be sure all hoses and main wire harness connectors are reconnected to the correct locations.
- 22. Start and test the machine. Fill the solution tank. Turn on and operate the spray nozzle to ensure that it is functioning. Refer to the Operators Manual for detailed instructions how to use the spray nozzle.

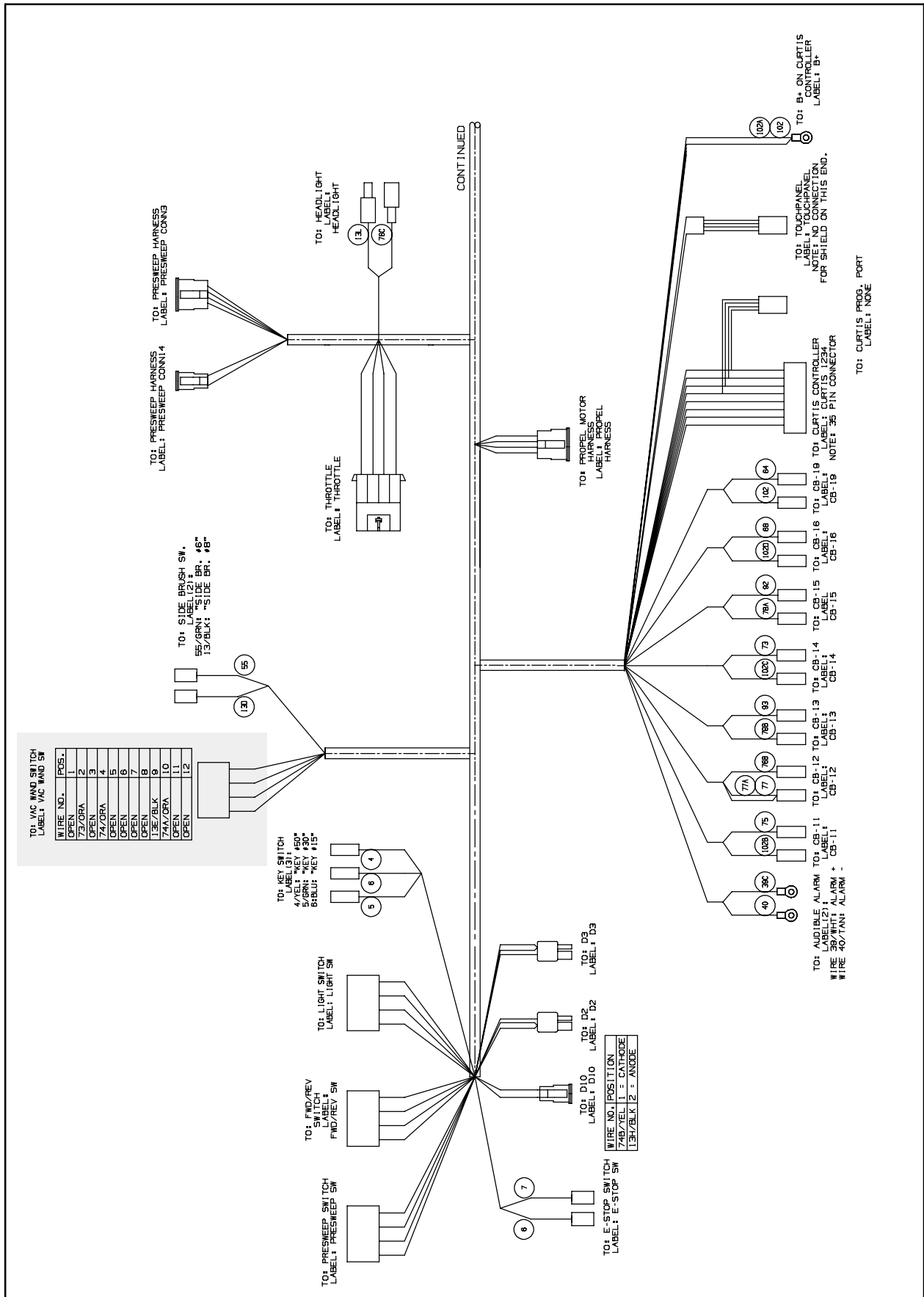


FIG. 5

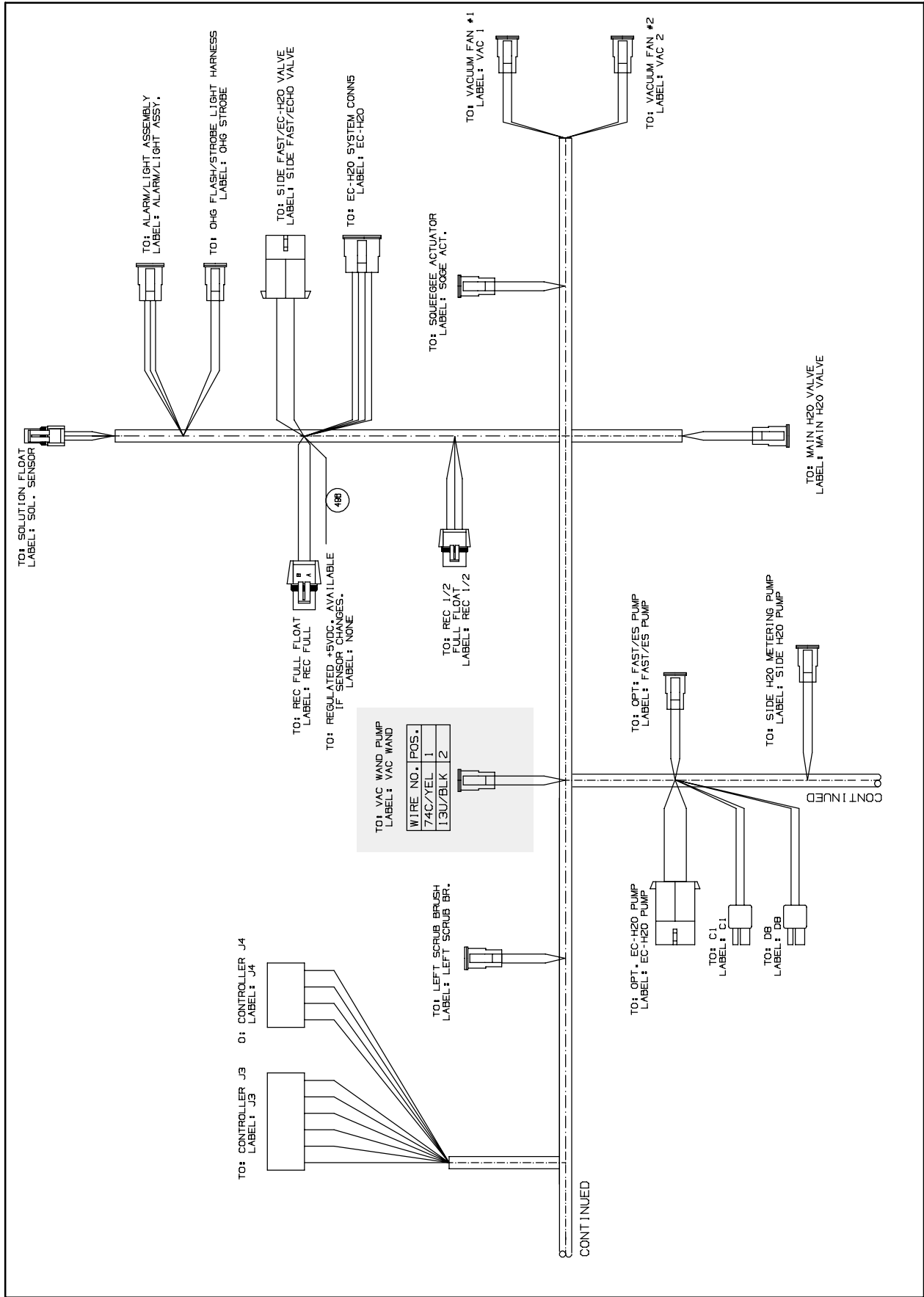
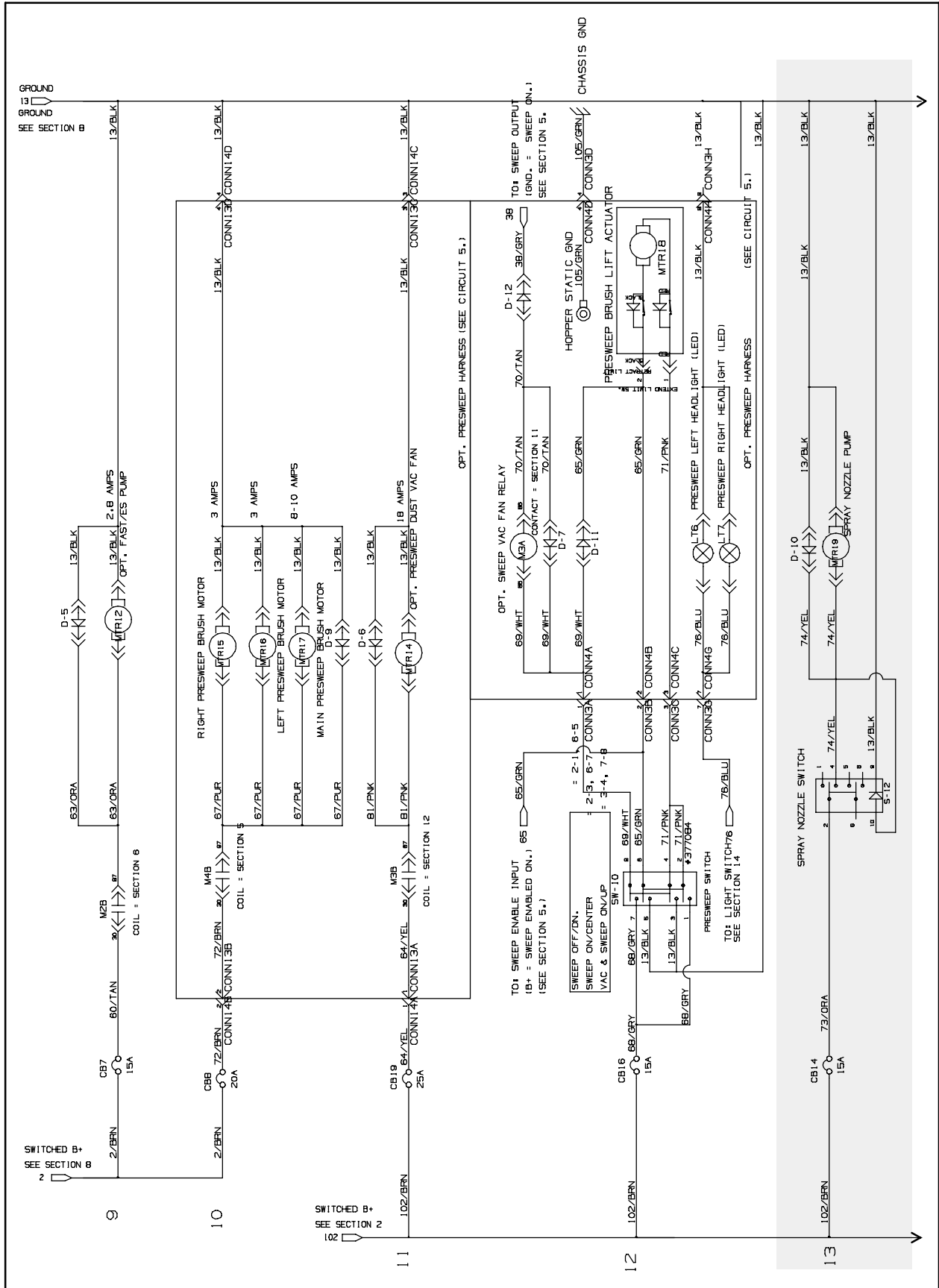


FIG. 6



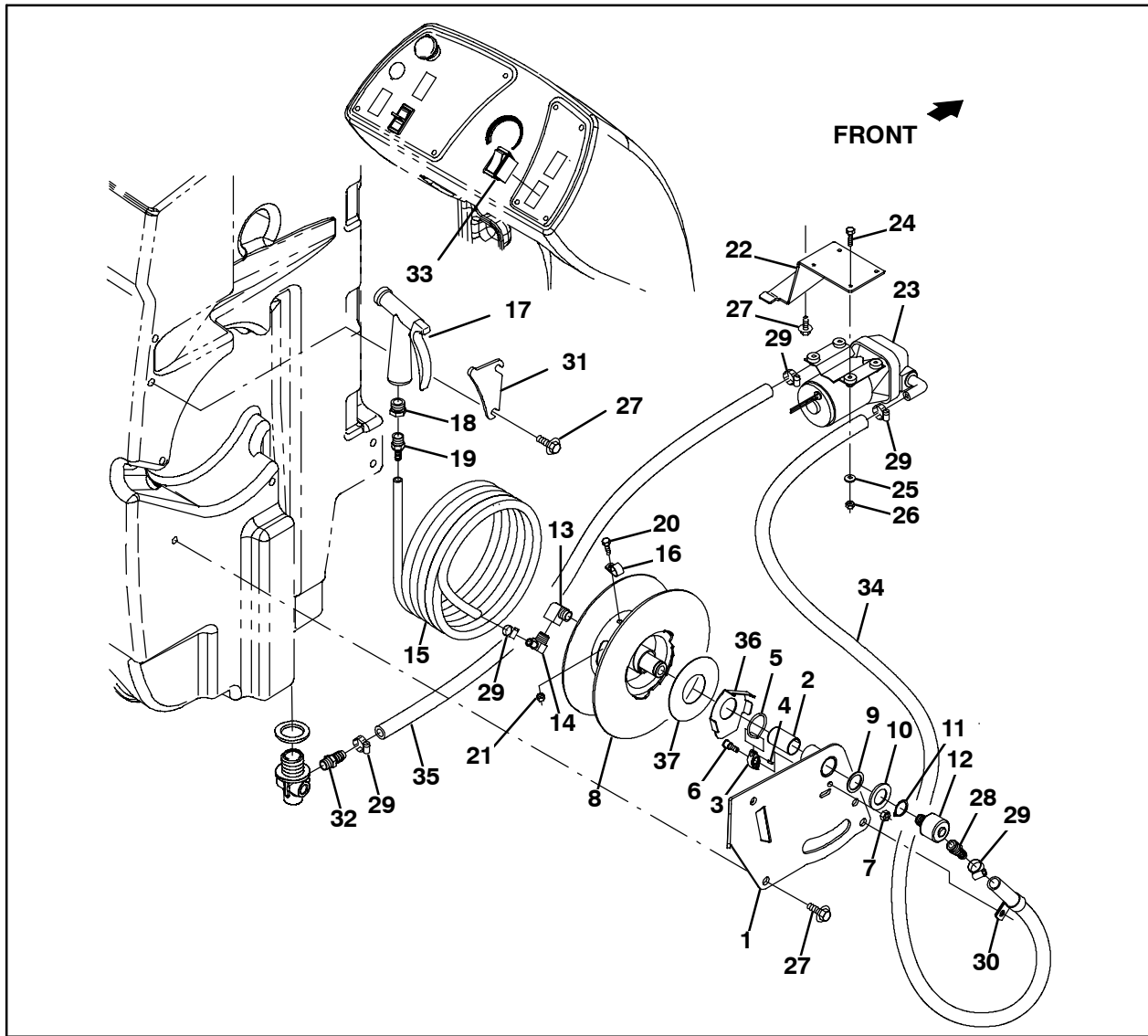


FIG. 7

**RESETTING REEL ASSEMBLY SPRING TENSION:**

*NOTE: Refer to Step 1 through Step 3 to reset the reel assembly spring tension on spray hose assemblies already installed on the machine. Refer to Step 4 to reset the reel assembly spring tension on spray hose assemblies not yet installed onto the machine..*

1. Wrap the spray hose (15) evenly back onto the reel assembly (8). Refer to Fig. 7.
2. Pull the spray hose (15) out from the reel assembly (8) until the reel assembly has turned at least three revolutions, adding tension to the spring inside the reel assembly.
3. Wrap the portion of spray hose (15) pulled from the reel assembly (8) back onto the reel.

4. Rewind the spray hose completely onto the reel and rotate the spray hose assembly mounting plate four complete turns clockwise to reset the spring tension. Refer to Fig. 8.

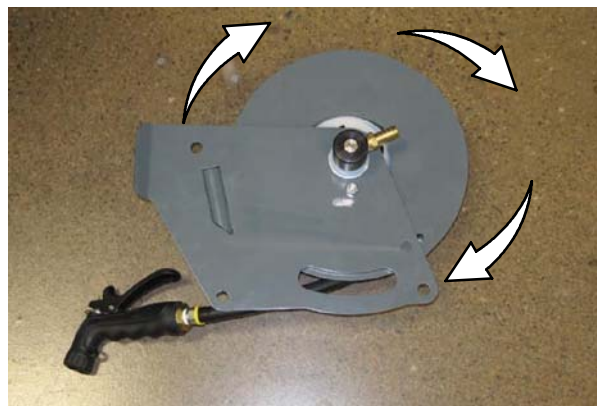


FIG. 8

**Bill Of Materials For Spray Hose Kit, CI [T16] - 9008043**

	<b>Ref.</b>	<b>Tennant Part No.</b>	<b>Description</b>	<b>Qty.</b>
▽		9008043	Spray Hose Kit, CI [T16]	1
▲	1	1055281	Plate Wldt, Mtg	1
▲	2	1057816	Bushing, Sleeve, 1.00B 1.13D 1.750L, FGL	1
▲	3	1056288	Pawl, Ratchet	1
▲	4	1067151	Pin, Dowel, 0.125D X 0.37L, SS	1
▲	5	1056291	Seal, Org, .125 X 01.13ID [Nitrile]	1
▲	6	1056719	Bolt, Shld, .41D X 0.35, M8 X 1.2	1
▲	7	08709	Nut, Hex, Lock, M8 X 1.25, NL	1
▲	8	1061340	Reel Assy, Hose	1
▲	9	1057814	Washer, Thrust, Plstc 1.02B 1.38D	1
▲	10	32598	Washer, Flat, 1.02B 1.75D .12, Stl	1
▲	11	09005	Ring, Retaining, Ext, 1.00D, Basic	1
▲	12	1055248	Fitting, Swivel, .375 NPT	1
▲	13	24584	Fitting, Brs, E90, PF06/PM06, Spcl	1
▲	14	1060128	Fitting, Brs, E90, BM06/PM06, Short	1
▲	15	1061087	Hose, Rbr, 0.38ID, Bulk, Blk [Push-Lok] (16 FT)	1
▲	16	33584	Clamp, Cable, Stl, 0.63D X 0.50W, 1Hole	1
▲	17	769785	Nozzle, Spray, Gun	1
▲	18	1027976	Fitting, Brs, Str, PF06/PM12	1
▲	19	1060428	Fitting, Stl, Str, BM06/PM06, Swivel	1
▲	20	06943	Screw, Hex, M6 X 1.00 X 20, 8.8	1
▲	21	08708	Nut, Hex, Lock, M6 X 1.00, NL	1
▲	22	1056538	Bracket, Pump, Wand, Spray	1
▲	23	1054178	Pump, Soltn, Ele, 36VDC, 45PSI	1
▲	24	12316	Screw, Hex, M5 X 0.80 X 25, SS	4
▲	25	01683	Washer, Flat, 10, SS	4
▲	26	09739	Nut, Hex, Lock, M5 X 0.80, NL, SS	4
▲	27	1020341	Screw, Hex, M8 X 1.25 X 20, SS, SEMS	6
▲	28	14884	Fitting, Brs, Str, BM08/PM06 [Taped]	1
▲	29	54333	Clamp, Hose, Worm Drive, 0.31-0.88D, .31W	5
▲	30	69234	Clamp, Cable, Stl, 1.00D X 0.75W, 1Hole	1
▲	31	1059436	Hook, Nozzle, HD Pye	1
▲	32	64743	Fitting, Plstc, Str, BM08/PM06	1
▲	33	398500	Switch, Rocker, Dpdt, On / None / On	1
▲	34	376716	Hose, PVC, Brd, 0.50ID 0.73OD, Bulk, Clr (2.9 FT)	1
▲	35	376716	Hose, PVC, Brd, 0.50ID 0.73OD, Bulk, Clr (1.9 FT)	1
▲	36	1066909	Washer, Retainer, Spring	1
▲	37	1066919	Washer, Thrust, 50.0B 110.0D 0.79W	1

TENNANT COMPANY  
P. O. Box 1452  
Minneapolis, MN 55440-1452